

# REFEREE EDUCATION AND DEVELOPMENT FRAMEWORK



Australian Government  
Australian Sports Commission



# CONTENTS



Introduction	1
Recognition of Prior Learning for Rugby League Referees	2
Referee Courses	2
Referee Workshops	3
Referee Development Modules	3
Affiliate Referee Course	4
Representative Referee Theory Course	5
Representative Referee Grading	6
State Referee Grading	7
National Referee Grading	8

Material Title: Referee Education and Development Framework  
Material Type: Framework  
Material Developed by: Touch Football Australia

Version Number	Release Date	Amendments made	Authorised by	Archive Date
1:0	3/3/2025	Initial release of Framework with amendments to Referee Education in alignment to the Modern Approach to Officiating	TFA Board	-

COPYRIGHT © TOUCH FOOTBALL AUSTRALIA

All rights reserved. These contents of this document are copyright. Except as permitted under the Copyright Act, no part may be reproduced by any process, electronic or otherwise, without the specific written permission of Touch Football Australia.



# INTRODUCTION

Touch Football Australia (TFA) has developed the Referee Education and Development Framework (Framework) to ensure that we are creating an environment for our referees to be the best they can be and ensure that they have the knowledge, skills, and resources to Enhance the Experience of our participants at all levels of the game to ensure that we can Grow the Sport. TFA will deliver best practice in referee education and development through this framework in alignment to the Australian Sport Commission's 'modern officiating approach' while incorporating The Australian Physical Literacy Framework's four domains of Physical, Psychological, Social and Cognitive development.

A holistic long-term approach to our referee development will ensure that all referees in our game are equipped with the knowledge, skills and resources which enable referees to value, develop and maintain a life-long love our game.

Underpinning the Framework are our four key pillars which are focussed on a philosophy of continuous development and non-linear opportunities for our referees in their journey throughout our sport. These four pillars are our:

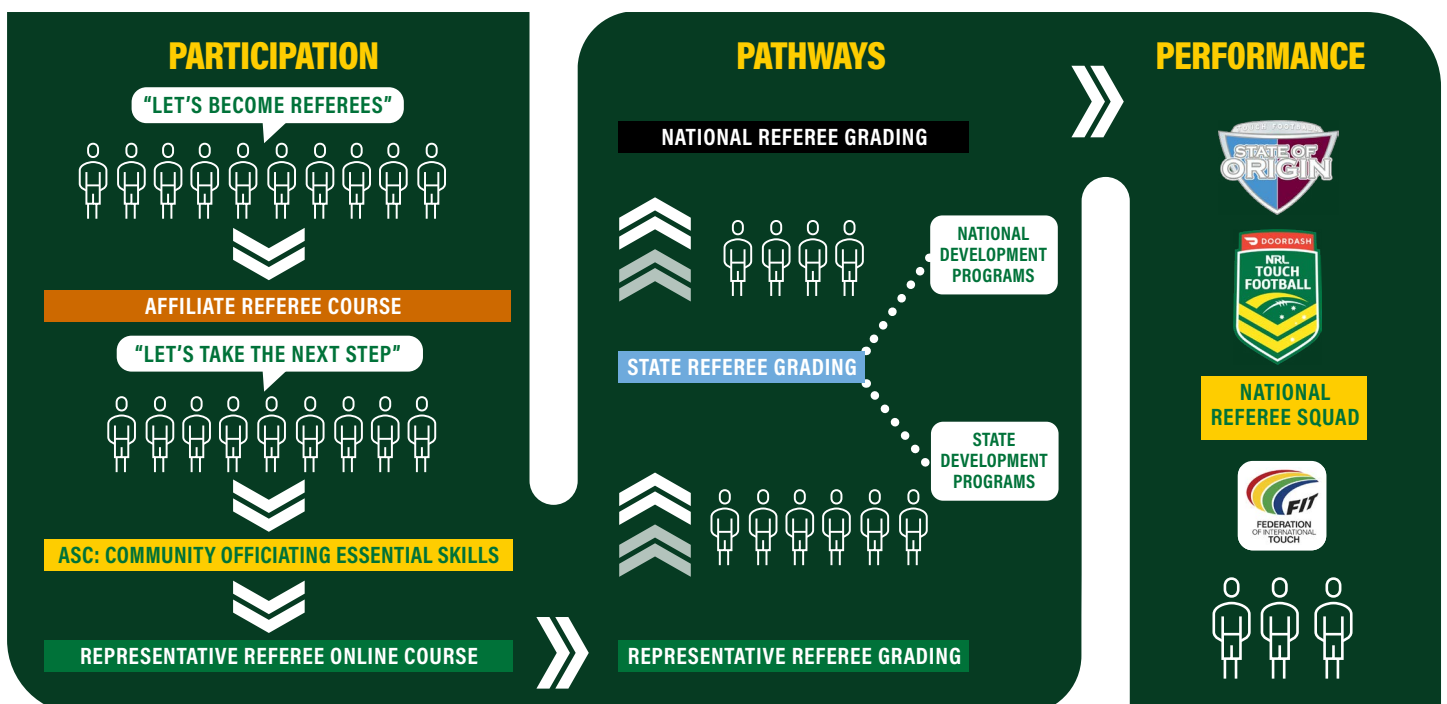
- » Referee Courses
- » Referee Grading Opportunities
- » Referee Workshops
- » Referee Development Modules

The Framework places a strong emphasis on preparing our referees to develop the key skills from the Physical, Psychological, Social and Cognitive domains within the three key environments of Touch Football, being:

- » Participation
- » Pathways
- » Performance

In a refereeing space, referee grades fit into the following environments:

- » Participation:
  - Affiliate Referee and Representative Referee
- » Pathways:
  - State Referee and National Referee





# RECOGNITION OF PRIOR LEARNING FOR ACCREDITED RUGBY LEAGUE REFEREES

As part of TFA's strategic partnership with the National Rugby League, TFA is pleased to offer Recognition of Prior Learning (RPL) to all accredited Rugby League referees who seek to join the Touch Football referee community. Referees who demonstrate that:

1. They hold a current qualification in rugby league; and
2. Have held the qualification for longer than one (1) year.

will be able to submit a request for RPL to Affiliate Referee status through The Nest.

## REFEREE COURSES

TFA's Referee Courses (Courses) are the formal stream of education to Touch Football referees. TFA designs, develops and manages the content of the Courses in consultation with our State and Territory bodies to ensure that the educational outcomes within the framework are consistent across the country. The Courses are designed to equip our referees with the necessary skills to officiate in their respective environments while delivering quality experiences to our participants. There are two levels of Course available to referees:

- » Affiliate Referee Course
- » Representative Referee Theory Course

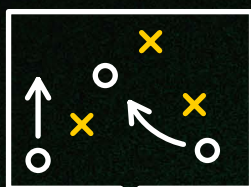


# REFEREE WORKSHOPS

Referee Workshops (Workshops) are delivered to reinforce the content delivered through eLearning and to bridge any 'gap' identified in the referee journey. These Workshops will provide development opportunities to referees who may wish to remain in their current officiating environments. Workshops may be delivered by TFA and/or its State and Territory bodies and cover topics such as:



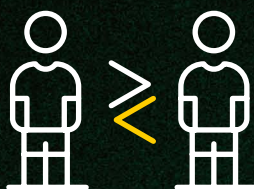
Skill development activities aligned to the key areas from the new Grading sheets



Game scenarios workshopping from tournament environments



Engaging in a positive practice and match environment



Engaging with other referees in your network



Mentoring other officials and leading teams.

# REFEREE DEVELOPMENT MODULES

Referee Developments Modules (Modules) are short courses designed to provide learning opportunities for referees seeking to develop their knowledge outside of the formal Grading pathway. A variety of Modules will be available yearly, including a 'whole of sport' referee specific update identifying trends of the game that have been identified through the National Referee Program. In addition to TFA developed Modules, there are a variety of educational resources available through the Australian Sports Commission and Australian Institute of Sport platforms.



THE  
NEST



Australian Government  
Australian Sports Commission





# AFFILIATE REFEREE COURSE

The Affiliate Referee Course is a face-to-face course designed to equip referees with the foundational knowledge and essential skills to officiate in Participation environments. To foster a life-long love of Touch Football, referees in the participation environment will focus on officiating environments that are fun, inclusive, and safe, regardless of athletes' age or ability.

Course Format	» Three (3) hours face-to-face
Facilitator	» TFA Accredited Facilitator
Pre-Course Requirements	» Nil
Minimum Age	» Turning 12 in the calendar year
Key Outcomes	<ul style="list-style-type: none"> <li>» Officiate in environments focussed on fun, inclusivity and safety regardless of age or ability to support the development of players</li> <li>» Basic understanding of the rules of the game</li> <li>» Ensure that officials foster a life-long love of the game</li> </ul>
Course Content	<ol style="list-style-type: none"> <li>1. Understanding and applying the rules</li> <li>2. Applying the essential skills of officiating</li> <li>3. Positioning and match awareness</li> <li>4. Referee pathways and development</li> </ol>
Assessment	» In-class formative quiz
Referee Coach	» Foundation Referee Coaches
Development Opportunities	<ul style="list-style-type: none"> <li>» Representative Referee Online Theory Course</li> <li>» Referee Workshops</li> <li>» Referee Development Modules</li> </ul>





# REPRESENTATIVE REFEREE THEORY COURSE

The Representative Referee Theory Course is an eLearning course designed for referees looking to officiate in Pathways environments and seek Grading at a representative event. Referees who complete this course will learn the essential knowledge and skills to officiate in representative events. Representative Referees are responsible for working with referee coaches to develop their individual knowledge and athletic skills for the 'next step' in their Touch Football officiating journey, while continuing to foster a life-long love of the sport.

Course Format	» Online theory course
Pre-Course Requirements	<ul style="list-style-type: none"> <li>» Affiliate Referee Course</li> <li>» Australian Sports Commission Community Officiating Essential Skills eLearning course</li> </ul>
Minimum Age	» Turning 13 in the calendar year
Key Outcomes	<ul style="list-style-type: none"> <li>» Ready to Officiate in tournament environments in the representative arena</li> <li>» Ensuring fun, inclusivity and safety regardless of age or ability to support the development of players</li> <li>» Advanced understanding of the rules of the game</li> <li>» Understand their role as an athlete, with a holistic focus on skill development alongside game outcomes</li> </ul>
Course Content	<ol style="list-style-type: none"> <li>1. Introduction to Representative Refereeing</li> <li>2. Understanding and Applying the Rules</li> <li>3. Communication and Teamwork</li> <li>4. Positioning and Game Awareness</li> <li>5. Effectively Resolving Conflict</li> <li>6. Improving as a Referee</li> </ol>
Assessment	» Online summative quiz
Referee Coach	» Foundation and Talent Referee Coaches
Development Opportunities	<ul style="list-style-type: none"> <li>» Representative Referee Grading</li> <li>» Referee Workshops</li> <li>» Referee Development Modules</li> </ul>



# REPRESENTATIVE REFEREE GRADING



State/Territory bodies will be responsible for creating a calendar of events which their referees are eligible to attend for Grading. These Designated Events may change from time to time and could include:



Pre-Grading Requirements	<ul style="list-style-type: none"> <li>» Has completed the Representative Referee Theory Course</li> <li>» Is endorsed by their Affiliate/Club to seek Grading at the event</li> </ul>
Minimum Age	<ul style="list-style-type: none"> <li>» Turning 13 in the calendar year</li> </ul>
Key Outcomes	<ul style="list-style-type: none"> <li>» Officiating in tournament environment in the representative arena</li> <li>» Demonstrating an advanced understanding of the rules of the game</li> <li>» Understand their role as an athlete, with a holistic focus on skill development alongside game outcomes</li> </ul>
Assessment	<ul style="list-style-type: none"> <li>» In-game Competency Assessment against Representative Referee Grading Sheet</li> <li>» To achieve a Grading, a referee must be viewed by a minimum of three (3) different referee coaches. Regardless of the number of games viewed, each coach will lodge only one (1) vote and the Referee must receive a clear majority of in-game assessments in favour of the upgrade</li> </ul>
Referee Coaches	<ul style="list-style-type: none"> <li>» Designated Event Upgrades Panel Appointed Referee Coaches</li> <li>» Foundation and Talent Referee Coaches</li> </ul>
Development Opportunities	<ul style="list-style-type: none"> <li>» Referee Workshops</li> <li>» Referee Development Modules</li> <li>» State Referee Grading</li> </ul>







# STATE REFEREE GRADING

The State Referee Grading is achieved via an in-game competency assessment for referees seeking to progress in Pathways environments. Referees who achieve this grading will demonstrate the essential skills to officiate in environments that are outcome driven at State/Territory level. State Graded Referees are assessed by their State/Territory body and are responsible for working with referee coaches to further develop their individual skills for the 'next step' in their Touch Football officiating journey, while continuing to foster a life-long love of the sport.

A State Referee Grading is available once per year at the flagship event in their home State/Territory. Referees may seek dispensation to attend an event for Grading outside their home State/Territory or at the National Youth Championships event.



QLD STATE CUP



Pre-Grading Requirements	<ul style="list-style-type: none"> <li>» Is endorsed by their Affiliate/Club to seek upgrade at the event</li> <li>» Endorsed by Regional Referee Director and/or State Panel for Upgrade</li> <li>» Has held a Representative Referee Grading for a minimum of six (6) months</li> </ul>
Minimum Age	<ul style="list-style-type: none"> <li>» Turning 16 in the calendar year</li> </ul>
Key Outcomes	<ul style="list-style-type: none"> <li>» Officiate in environments with a sharp focus on achieving game outcomes</li> <li>» Referee as an athlete, demonstrating the skills to progress in the pathway</li> <li>» Manage their team of Referees in game environments</li> <li>» Ensure that they foster a life-long love of the game</li> </ul>
Assessment	<ul style="list-style-type: none"> <li>» In-game Competency Assessment against State Referee Grading Sheet</li> <li>» To achieve a Grading, a referee must be viewed by a minimum of three (3) different referee coaches. Regardless of the number of games viewed, each coach will lodge only one (1) vote and the Referee must receive a clear majority of in-game assessments in favour of the upgrade</li> </ul>
Referee Coaches	<ul style="list-style-type: none"> <li>» State Upgrades Panel Appointed Referee Coaches</li> <li>» Talent and Elite Referee Coaches</li> </ul>
Development Opportunities	<ul style="list-style-type: none"> <li>» Referee Workshops</li> <li>» Referee Development Modules</li> <li>» National Referee Grading</li> </ul>





# NATIONAL REFEREE GRADING

The National Referee Grading is achieved via an in-game competency assessment for referees seeking to officiate in Performance environments. Referees who achieve this grading will demonstrate the essential knowledge and skills to officiate in environments that are focussed on achieving game outcomes, while also demonstrating leadership skills to drive the professionalism of their community forward. National Referees work with referee coaches to further develop their individual skills for the 'next step' in their Touch Football officiating journey, while continuing to foster a life-long love of the sport.

Successfully graded national referees are expected to take on a mentoring role for other officials in team-based environments inside and outside of event structures. A National Referee Grading is available once per year at the flagship event in Australia:



Pre-Grading Requirements	<ul style="list-style-type: none"> <li>» Has held a State Referee Grading for a minimum of six (6) months</li> <li>» Is endorsed by their State/Territory body to seek upgrade at the National Titles</li> <li>» Sport Integrity Australia: Safeguarding Children and Young People Induction</li> <li>» Sport Integrity Australia: Anti-doping Fundamentals Course</li> <li>» Sport Integrity Australia: Competition Manipulation &amp; Sport Gambling Course</li> </ul>
Minimum Age	<ul style="list-style-type: none"> <li>» Turning 18 in the calendar year</li> </ul>
Key Outcomes	<ul style="list-style-type: none"> <li>» Officiate and achieve consistent game outcomes at national events</li> <li>» Referee as an elite athlete, demonstrating the skills and competencies at the national level</li> <li>» Lead a team of referees in event environments</li> </ul>
Assessment	<ul style="list-style-type: none"> <li>» In-game Competency Assessment against National Referee Grading Sheet</li> <li>» To achieve a Grading, a referee must be viewed by a minimum of three (3) different referee coaches. Regardless of the number of games viewed, each coach will lodge only one (1) vote and the Referee must receive a clear majority of in-game assessments in favour of the upgrade</li> </ul>
Referee Coaches	<ul style="list-style-type: none"> <li>» National Upgrades Panel Appointed Referee Coaches</li> <li>» Talent and Elite Referee Coaches</li> </ul>
Development Opportunities	<ul style="list-style-type: none"> <li>» Referee Workshops</li> <li>» Referee Development Modules</li> </ul>



Communication	Representative Standard	State Standard	National Standard
Tone and delivery of messages is reflective of the game situation	Usually 40 – 70%	Consistently 70 – 90%	Consistently 70 – 90%
Is clear and concise in their delivery	Usually 40 – 70%	Consistently 70 – 90%	Expertly 90 – 100%
Applies Mandatory Communication Processes (Preload, Touch count and defensive control)	Consistently 70 – 90%	Expertly 90 – 100%	Expertly 90 – 100%
Uses communication strategies which promote Player rapport	Consistently 70 – 90%	Expertly 90 – 100%	Expertly 90 – 100%
Communicates effectively to Attack and Defence in Rollball situations	Usually 40 – 70%	Consistently 70 – 90%	Consistently 70 – 90%
Communicates on the Try Line to facilitate game outcomes for the Attack and Defence	Consistently 70 – 90%	Consistently 70 – 90%	Expertly 90 – 100%
Game Awareness and Positioning	Representative Standard	State Standard	National Standard
Applies M.O.S.T. on the Try Line to maintain proximity to the ball	Consistently 70 – 90%	Expertly 90 – 100%	Expertly 90 – 100%
Applies S.W.E.A.T. throughout the game	Consistently 70 – 90%	Expertly 90 – 100%	Expertly 90 – 100%
Consistent physical presence within the 7m Zone where game speed allows	Usually 40 – 70%	Consistently 70 – 90%	Consistently 70 – 90%
Anticipates the Change of Possession and gains control on the 7m to 7m transition	Usually 40 – 70%	Usually 40 – 70%	Consistently 70 – 90%
Sets an appropriate position as the Sideline Referee to assist managing the Defence	Consistently 70 – 90%	Consistently 70 – 90%	Expertly 90 – 100%
Uses warnings on the run and Advantage play to facilitate game outcomes	Sometimes 20 – 40%	Consistently 70 – 90%	Consistently 70 – 90%
Demonstrates game awareness in Penalty selection	Usually 40 – 70%	Consistently 70 – 90%	Expertly 90 – 100%
7m Control	Representative Standard	State Standard	National Standard
Is appropriately positioned laterally across the 7m line	Usually 40 – 70%	Consistently 70 – 90%	Expertly 90 – 100%
Sets or manages the 7m distance early	Sometimes 20 – 40%	Usually 40 – 70%	Consistently 70 – 90%
Has an accurate 7m distance	Sometimes 20 – 40%	Usually 40 – 70%	Consistently 70 – 90%
Creates 7m space between Attack and Defence	Usually 40 – 70%	Consistently 70 – 90%	Expertly 90 – 100%
Appropriately identifies the impact of the Offside Player Sometimes	Sometimes 20 – 40%	Consistently 70 – 90%	Expertly 90 – 100%
Whistle and Signals	Representative Standard	State Standard	National Standard
Has a clear and audible whistle	Consistently 70 – 90%	Consistently 70 – 90%	Expertly 90 – 100%
Uses the appropriate whistle length and tone	Usually 40 – 70%	Consistently 70 – 90%	Expertly 90 – 100%
Uses signals clearly and correctly	Consistently 70 – 90%	Consistently 70 – 90%	Expertly 90 – 100%
Uses whistle and signals to display control and manage the game	Usually 40 – 70%	Consistently 70 – 90%	Expertly 90 – 100%
Systems, Processes and Outcomes	Representative Standard	State Standard	National Standard
Interchanges are made effectively	Usually 40 – 70%	Consistently 70 – 90%	Expertly 90 – 100%
Interchanges at an appropriate time and place to enhance game outcomes	Usually 40 – 70%	Consistently 70 – 90%	Expertly 90 – 100%
Consistently and accurately applies the Rules to make decisions	Usually 40 – 70%	Consistently 70 – 90%	Consistently 70 – 90%



**TOUCH FOOTBALL AUSTRALIA**  
Suite 1/18 Napier Close, Deakin ACT 2600  
[www.touchfootball.com.au](http://www.touchfootball.com.au)  
ABN 55 090 088 207