

THE CHAMPIONSHIPS 2025

TOUCH FOOTBALL AUSTRALIA
ALL ABILITIES DIVISION



T3 RULE ADJUSTMENTS

WHOLE TEAM

ON FIELD

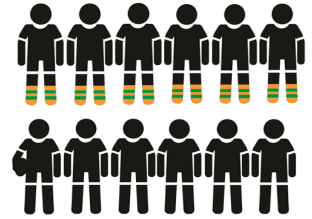
Max 16 players per team *only 14 can participate in each game

CA: 16 / NCA: 0

CA: 10 / NCA: 6

CA: 6 / NCA: 0

CA: 6 / NCA: 6



NCA PLAYER RATIO: MIN

NCA PLAYER RATIO: MAX

NCA PLAYER RATIO: MIN

NCA PLAYER RATIO: MAX



RULE: CA tries are worth one (1) point

SIGNAL: Award try. Raise one arm above head

RESULT: Mark one (1) try on the score card



RULE: CA can run from half

SIGNAL: Play on

RESULT: Play continues. If touched it is deemed as



RULE: NCA cannot score

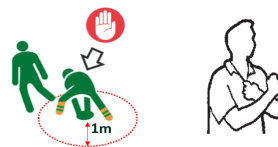
SIGNAL: Ball down signal.

RESULT: Do not mark a try on the scorecard

RULE: NCA cannot move more than 1m from the roll ball

SIGNAL: If they move outside of 1m it is deemed as half being caught in possession.

RESULT: Change of possession

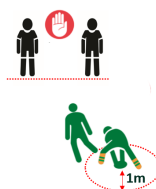


WHOLE TEAM

RULE: Defenders cannot move until the half has either passed the ball or moved outside of 1m from the roll ball

SIGNAL: Two arms out with a verbal 'HOLD' call.

RESULT: Players who have advanced must return to an inside position.



THE CHAMPIONSHIPS 2025

TOUCH FOOTBALL AUSTRALIA

ALL ABILITIES DIVISION

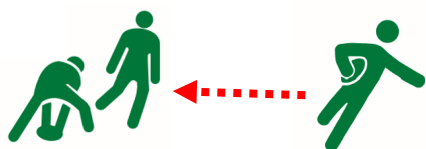


T3 RULE[↑] ADJUSTMENTS

INTERPRETATION ADJUSTMENTS

OVER THE MARK

Allow player to return to the mark and re-roll the ball



INTERCHANGE

Allow for a 1m grace distance during the interchanges



FAIR PLAY RULE

When a try results in a team having a lead of **ten tries** or above the score will be assigned as the final result.



ZERO TOLERANCE

VERBAL

Verbal abuse at a referee or player whether in the same team or opposition

- **Targeted** (directed towards someone) – player will be forced sub for the remainder of the game (complete process as a send-off)
- **General** (frustration/medical condition) - player will be forced sub but can return if permitted by their coach

PHYSICAL

- **NO WARNINGS:** Every penalty given for a hard touch will result in a forced substitution.

ROLE OF A TIER 3 NCA

- Assist and support players around the field
- Give supportive instructions from behind the play
- Actively involved in gameplay i.e.. Running the ball and passing
- Pushing competitive boundaries

