

# THE CHAMPIONSHIPS 2025

TOUCH FOOTBALL AUSTRALIA  
ALL ABILITIES DIVISION



# T2 RULE ADJUSTMENTS

## WHOLE TEAM

## ON FIELD

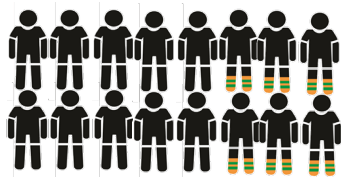
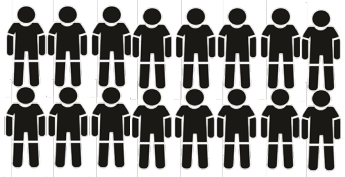
Max 16 players per team \*only 14 can participate in each game

CA: 16 / NCA: 0

CA: 10 / NCA: 6

CA: 6 / NCA: 0

CA: 4 / NCA: 2



NCA PLAYER RATIO: MIN

NCA PLAYER RATIO: MAX

NCA PLAYER RATIO: MIN

NCA PLAYER RATIO: MAX

CA



**RULE:** CA tries are worth one (1) point

**SIGNAL:** Award try. Raise one arm above head

**RESULT:** Mark one (1) try on the score card



**RULE:** CA can run from half

**SIGNAL:** Play on

**RESULT:** Play continues. If touched it is deemed as



**RULE:** NCA cannot score

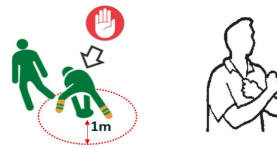
**SIGNAL:** Ball down signal.

**RESULT:** Do not mark a try on the scorecard

**RULE:** NCA cannot move more than 1m from the roll ball

**SIGNAL:** If they move outside of 1m it is deemed as half being caught in possession.

**RESULT:** Change of possession



NCA

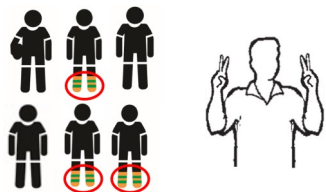


## WHOLE TEAM

**RULE:** More than two (2) NCA on the field.

**SIGNAL:** Raise two (2) fingers on each hand

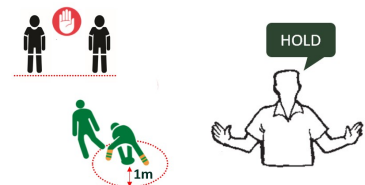
**RESULT:** Change of possession at half-way



**RULE:** Defenders cannot move until the half has either passed the ball or moved outside of 1m from the roll ball

**SIGNAL:** Two arms out with a verbal 'HOLD' call.

**RESULT:** Players who have advanced must return to an onside position.



# THE CHAMPIONSHIPS 2025

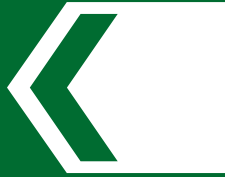
TOUCH FOOTBALL AUSTRALIA

ALL ABILITIES DIVISION



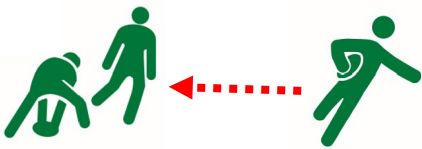
# T2 RULE<sup>↑</sup> ADJUSTMENTS

## INTERPRETATION ADJUSTMENTS



### OVER THE MARK

Allow player to return to the mark and re-roll the ball



### INTERCHANGE

Allow for a 1m grace distance during the interchanges



### FAIR PLAY RULE

When a try results in a team having a lead of **ten tries** or above the score will be assigned as the final result.



## ZERO TOLERANCE

### VERBAL

Verbal abuse at a referee or player whether in the same team or opposition

- **Targeted** (directed towards someone) – player will be forced sub for the remainder of the game (complete process as a send-off)
- **General** (frustration/medical condition) - player will be forced sub but can return if permitted by their coach

### PHYSICAL

- **NO WARNINGS:** Every penalty given for a hard touch will result in a forced substitution.

# DROP » OFF

### FIRST 2 MIN

CA: 3-4 / NCA: 0-1



### ADDED TIME

CA: 3 / NCA: 0

