

THE CHAMPIONSHIPS 2024

TOUCH FOOTBALL AUSTRALIA
ALL ABILITIES DIVISION



T1 RULE ADJUSTMENTS

WHOLE TEAM

ON FIELD

Max 16 players per team *only 14 can participate in each game

CA: 16 / NCA: 0

CA: 13 / NCA: 3

CA: 6 / NCA: 0

CA: 5 / NCA: 1



NCA PLAYER RATIO: MIN

NCA PLAYER RATIO: MAX

NCA PLAYER RATIO: MIN

NCA PLAYER RATIO: MAX

CA



RULE: CA tries are worth one (1) point

SIGNAL: Award try. Raise one arm above head

RESULT: Mark one (1) try on the score card



RULE: CA can run from half

SIGNAL: Play on

RESULT: Play continues. If touched it is deemed as



RULE: NCA cannot score

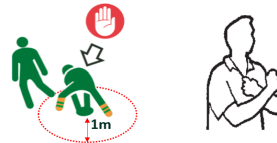
SIGNAL: Ball down.

RESULT: Do not mark a try on the scorecard

RULE: NCA cannot move more than 1m from the roll ball

SIGNAL: If they move outside of 1m it is deemed as half

RESULT: Change of possession



NCA

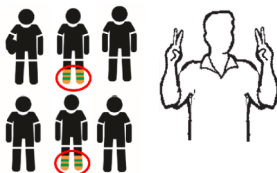


WHOLE TEAM

RULE: No more than one (1) NCA on the field.

SIGNAL: Raise two (2) fingers on each hand

RESULT: Change of possession at half-way



RULE: Defenders cannot move until the half has either passed the ball or moved outside of 1m from the roll ball

SIGNAL: Two arms out with a verbal 'HOLD' call.

RESULT: Players who have advanced must return to an inside position.



THE CHAMPIONSHIPS 2024

TOUCH FOOTBALL AUSTRALIA

ALL ABILITIES DIVISION



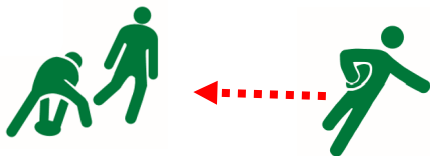
T1 RULE[↑] ADJUSTMENTS

INTERPRETATION ADJUSTMENTS



OVER THE MARK

Allow player to return to the mark and re-roll the ball



INTERCHANGE

Allow for a 1m grace distance during the interchanges



FAIR PLAY RULE

When a try results in a team having a lead of **ten tries** it will be assigned as the final result.



ZERO TOLERANCE

VERBAL

Verbal abuse at a referee or player whether in the same team or opposition

- **Targeted** (directed towards someone) – player will be forced sub for the remainder of the game (complete process as a send-off)
- **General** (frustration/medical condition) - player will be forced sub but can return if permitted by their coach

PHYSICAL

- **NO WARNINGS:** Every penalty given for a hard touch will result in a forced substitution.

DROP » OFF

**FIRST
2 MIN**

CA: 4 / NCA: 0



**ADDED
TIME**

CA: 3 / NCA: 0

