

2021 INFERNO NTL

INDOMIE NOODLES
ALL ABILITIES DIVISION



RULE ADJUSTMENTS

CA: Certified Athlete / NCA: Non-certified Athlete

CA: 6 / NCA: 0



CA: 3 / NCA: 3



PLAYER RATIO: MIN

PLAYER RATIO: MAX

CA



RULE: CA tries are worth two (2) points

SIGNAL: Award try. Raise two arms above head

RESULT: Mark two (2) tries on the score card



RULE: CA can run from half

SIGNAL: Play on

RESULT: Play continues. If touched it is deemed as half being caught in possession.



RULE: NCA tries are worth one (1) point

SIGNAL: Award try. Raise one arm above head

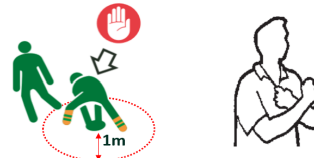
RESULT: Mark one (1) try on the score card



RULE: NCA cannot move more than 1m from the roll ball

SIGNAL: If they move outside of 1m it is deemed as half being caught in possession.

RESULT: Change of possession



NCA



WHOLE TEAM

RULE: 'FAIR PLAY RULE' When a try results in a team having a lead of ten (10) or above the score will be assigned as the final result.

SIGNAL: At half way signal the end of game.

RESULT: Scores are recorded as the final result.
Couches are notified of the final score.
Game continues with no additional tries being recorded.



RULE: Defenders cannot move until the half has either passed the ball or moved outside of 1m from the roll ball

SIGNAL: Two arms out with a verbal 'HOLD' call.

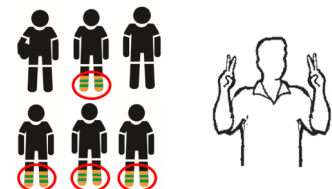
RESULT: Players who have advanced must return to an inside position.



RULE: More than three (3) NCA on the field.

SIGNAL: Raise two (2) fingers on each hand

RESULT: Change of possession at half-way



2021 INFERNO NTL

INDOMIE NOODLES
ALL ABILITIES DIVISION

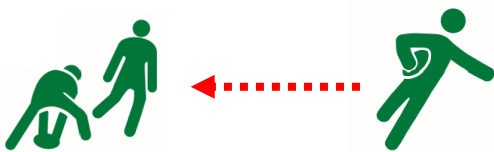


RULE ADJUSTMENTS

INTERPRETATION ADJUSTMENTS

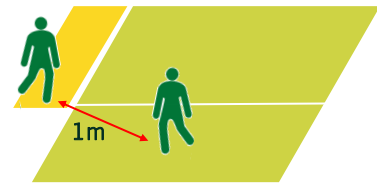
OVER THE MARK

Allow player to return to the mark and re-roll the ball



INTERCHANGE

Allow for a 1m grace distance during the interchanges



ZERO TOLERANCE

VERBAL

Verbal abuse at a referee or player whether in the same team or opposition

- **Targeted** (directed towards someone) – player will be forced sub for the remainder of the game (complete process as a send-off)
- **General** (frustration/medical condition) - player will be forced sub but can return if permitted by their coach

PHYSICAL

- **NO WARNINGS:** Every penalty given for a hard touch will result in a forced substitution.

DROP OFF

FIRST 2 MIN

CA: 3-4 / NCA: 0-1



ADDED TIME

CA: 3 / NCA: 0

